



integration with integrity

**3907730 User's Manual**

**Mini-PCI Video Capture Module**

**Version 1.0**



---

## **Copyrights**

This document is copyrighted and all rights are reserved. It does not allow any non authorization in copied, photocopied, translated or reproduced to any electronic or machine readable form in whole or in part without prior written consent from the manufacturer.

In general, the manufacturer will not be liable for any direct, indirect, special, incidental or consequential damages arising from the use of inability to use the product or documentation, even if advised of the possibility of such damages. The manufacturer keeps the rights in the subject to change the contents of this document without prior notices in order to improve the function design, performance, quality and reliability. The author assumes no responsibility for any errors or omissions, which may appear in this document, nor does it make a commitment to update the information contained herein.

## **Trademarks**

Intel is a registered trademark of Intel Corporation.  
Award is a registered trademark of Award Software, Inc.

All other trademarks, products and or product's name mentioned herein are mentioned for identification purposes only, and may be trademarks and/or registered trademarks of their respective companies or owners.

---



## Introduction

The 3907730 is a Mini-PCI interface to video capture module which supports analog TV output applications like CCTV surveillance systems.

Ruggedly designed for high reliability surveillance systems in transport, aviation and defense applications.

## Packing list

Before you begin installing your card, please make sure that the following materials have been shipped:

- 1 3907730 Mini-PCI interface to video capture module
- 1 Startup manual
- 1 CD ROM for 3907730 Driver
- 2 Cables
- 1 WIRE 6P/4P/4P 1.25mm 13cm
- 1 WIRE 4P power/4P 1.25mm 10cm

If any of these items are missing or damaged, contact your distributor or sales representative immediately.

## Specifications

- Supports NTSC/PAL/SECAM video decoding
- Multiple composite and S-video inputs
- Fully PCI Rev. 2.1 compliant
- Auxiliary GPIO port to support external devices
- Multiple YCbCr and RGB pixel formats supported on output

## Mechanical and Environmental

- **Power requirement:** +12V DC for CCD from power CONN cable; +3.3V DC from power motherboard [miniPCI slot]
- **Size:** 44.6mm x 59.75mm
- **Operating Temperature:** 32°F ~ 140°F (0°C ~ 60°C)
- **OS support:** Windows 2000, XP, CE
- **API:** Simple User Interface

## Jumpers & Connectors

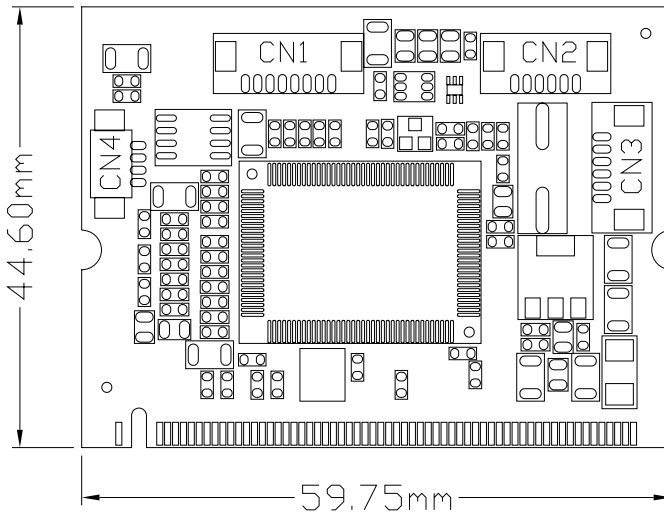
The table below lists the function of each of the jumpers and connectors

<b>VIDEO IN Connector (CN2)</b>			
Pin	Signal	Pin	Signal
1	CCD_VCC	2	GND
3	CCD1	4	GND_SIGNAL
5	VIDEO2(CCD2)	6	GND_SIGNAL

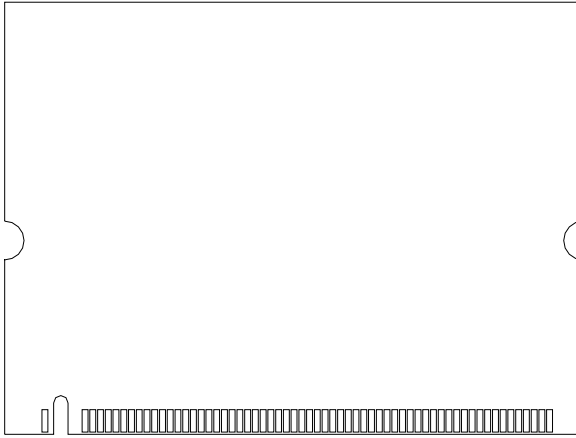
  

<b>+12V Power In Connector (CN4)</b>			
Pin	Signal	Pin	Signal
1	+12V	2	+12V
3	GND	4	GND

## Board Layout



*Mechanical Drawing (component side)*



*Mechanical Drawing (solder side)*

## **FCC**

*This device complies with the requirements in part 15 of the FCC rules: Operation is subject to the following two conditions:*

- 1. This device may not cause harmful interference, and*
- 2. This device must accept any interference received, including interference that may cause undesired operation*

*This equipment has been tested and found to comply with the limits for a Class A digital device, pursuant to Part 15 of the FCC Rules. These limits are designed to provide reasonable protection against harmful interference when the equipment is operated in a commercial environment. This equipment generates, uses, and can radiate radio frequency energy and, if not installed and used in accordance with the instruction manual, may cause harmful interference to radio communications. Operation of this device in a residential area is likely to cause harmful interference in which case the user will be required to correct the interference at his/her own expense. The user is advised that any equipment changes or modifications not expressly approved by the party responsible for compliance would void the compliance to FCC regulations and therefore, the user's authority to operate the equipment.*

## **Caution!**



**Achtung!**

*There is a danger of a new battery exploding if it is incorrectly installed. Do not attempt to recharge, force open, or heat the battery. Replace the battery only with the same or equivalent type recommended by the manufacturer. Discard used batteries according to the manufacturer's instructions.*

---

Any advice or comments about our products and service, or anything we can help you with please don't hesitate to contact with us. We will do our best to support your products, projects and business.



Address: Global American, Inc.  
17 Hampshire Drive  
Hudson, NH 03051

Telephone: Toll Free U.S. Only (800) 833-8999  
(603) 886-3900

FAX: (603) 886-4545

Website: <http://www.globalamericaninc.com>

Support: Technical Support at Global American

---