



User's Manual

Version 1.0 Release Date 2006/06/28

3907663

Copyrights

This manual is copyrighted and all rights are reserved. It does not allow any non authorization in copied, photocopied, translated or reproduced to any electronic or machine readable form in whole or in part without prior written consent from the manufacturer.

In general, the manufacturer will not be liable for any direct, indirect, special, incidental or consequential damages arising from the use of inability to use the product or documentation, even if advised of the possibility of such damages. The manufacturer keeps the rights in the subject to change the contents of this manual without prior notices in order to improve the function design, performance, quality and reliability. The author assumes no responsibility for any errors or omissions, which may appear in this manual, nor does it make a commitment to update the information contained herein.

Trademarks

Intel is a registered trademark of Intel Corporation.
Award is a registered trademark of Award Software, Inc.

All other trademarks, products and or product's name mentioned herein are mentioned for identification purposes only, and may be trademarks and/or registered trademarks of their respective companies or owners.

Packing List:

Please check the package content before you starting using the board.

Hardware:

3907663 PCI Bus Video Capture Card	x 1
Utility CD	x 1

Index

Chapter 1 <Introduction>

1.1 <Product Overview>.....	6
1.2 <Hardware requirement>.....	6
1.3 <Software requirement>.....	6
1.4 <Block Diagram>.....	7
1.5 < Dimensions>	8
1.6 < Jumper & connector location.....	9
1.7 < Card ID selecttion >.....	10
1.8 < GPIO Pin-assignment>.....	12
1.9 < Hardware installation>	13
Contact Information.....	14

(This Page is left for Blank)

Chapter 1 <Introduction>

1.1 <Product Overview>

Global American, Inc. 3907663 is a 4 channel Video input PCI Bus Video Capture Card That Support up to D1 resolution at 30/25 fps. 3907663 is allow 4 Card which installed in one PC system. By unitizing an onboard Jumper setting that identifies card ID. Also 3907663 supports NTSC/PAL signals.

1.2 <Hardware requirement>

- I. Intel Pentium III 1.0 GHz or above (The CPU speed depends on the video Frame rate, channels and resolution)
- II. 256 MB RAM or above
- III. Free PCI slot

1.3 <Software requirement>

Microsoft Windows 2000/XP with DirectX 9.0 or above

1.4 <Block Diagram>

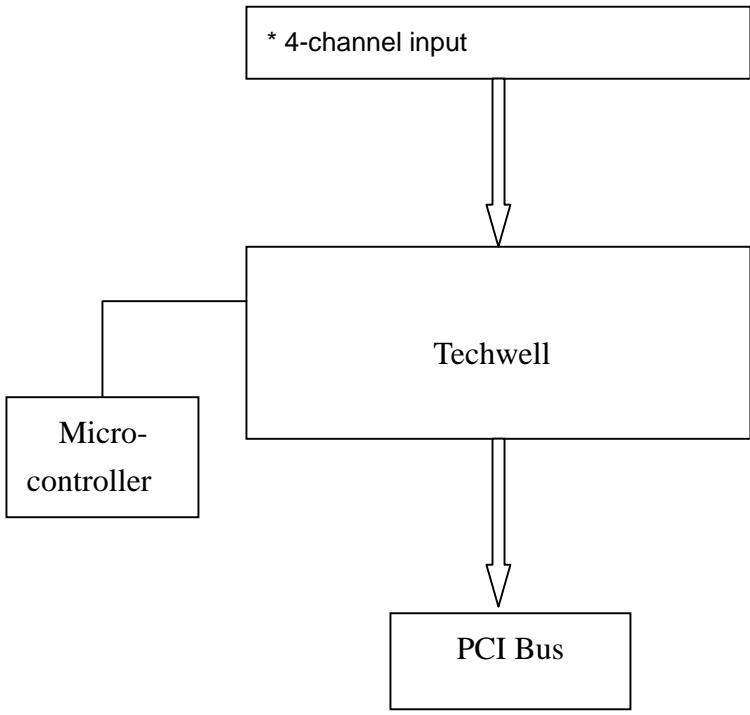


Figure 1.1 System Diagram

1.5 <Dimensions>

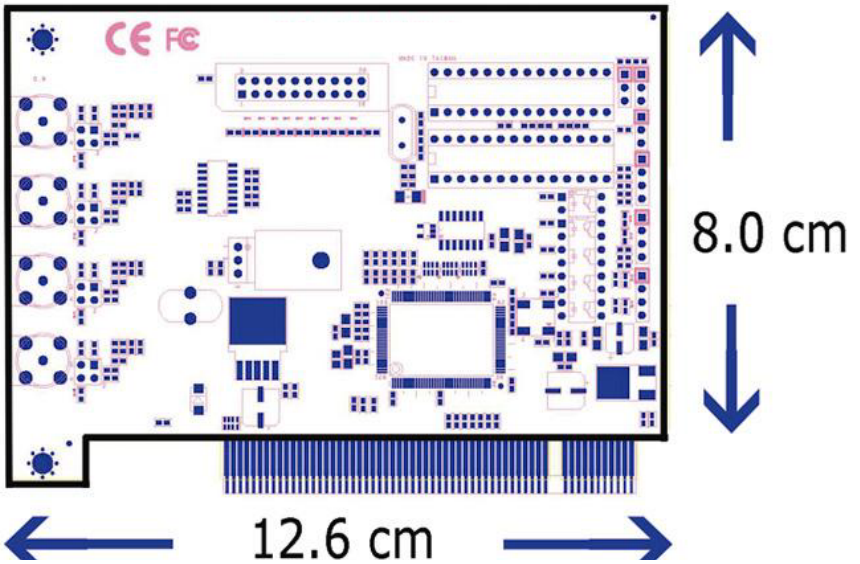


Figure 1.2 Dimensions

1.6 <Jumpers & connectors location >

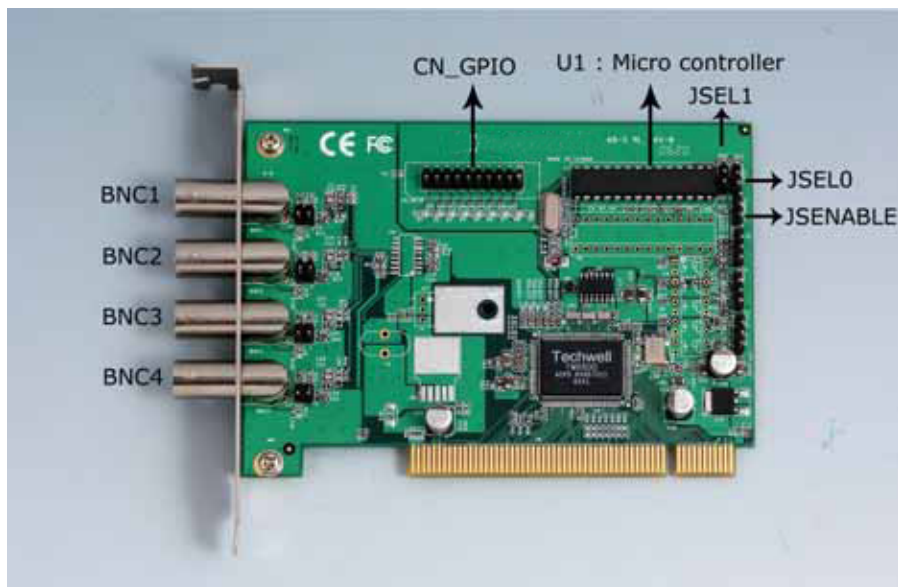
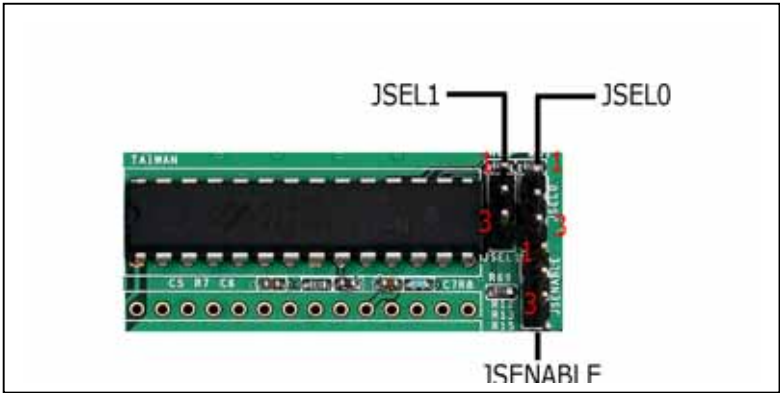


Figure 1.3

1.7 < Card ID selection >

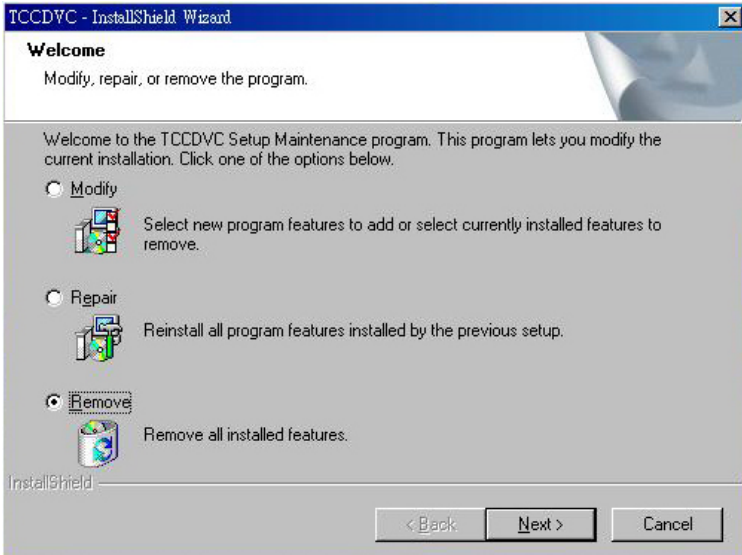
JSEL0 & JSEL1 For select Card ID



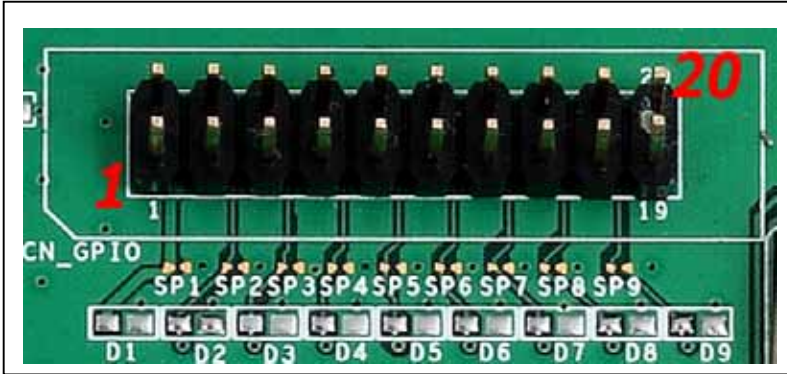
	JSEL1	JSEL0	Pin-Header Selection
Card 0	1-2	1-2	
Card 1	1-2	2-3	
Card 2	2-3	1-2	
Card 3	2-3	2-3	

Default Card ID is Card 0.

When you want to change Card ID , Please turn off the Computer ,
And use Utility CD to remove all installed features.
Then re-install after setting Card ID.



1.8 <GPIO Pin-assignment >



- Pin 4 = GPIO0
- Pin 6 = GPIO1
- Pin 8 = GPIO2
- Pin 10 = GPIO3
- Pin 12 = GPIO4
- Pin 14 = GPIO5
- Pin 16 = GPIO6
- Pin 18 = GPIO7

1.9 <Hardware installation >

1. Turn off your computer and unplug the power cord.
2. Remove the cover of your computer.
3. Touch the metal part on the surface of your computer to neutralize Any static electricity that might be on your body.
4. Set the Card ID.
5. Place the 3907663 into the Motherboard's PCI slot and connect Corresponding accessories to the 3907663
6. Replace the cover of your computer chassis
7. Plug in the power cord and turn on the computer.

Any advice or comments about our products and service, or anything we can help you with please don't hesitate to contact with us. We will do our best to support you for your products, projects and business.

Global American Inc.

Address: 17 Hampshire Drive
Hudson, NH 03051

TEL: Toll Free (U.S. Only) 800-833-8999
(603)886-3900

FAX: (603)886-4545

Website: <http://www.globalamericaninc.com>

E-Mail: salesinfo@globalamericaninc.com

