



Quick Installation Guide

3301900

Package Contents

3301900 package includes the following items:

- 1 x 3301900 single board computer
- 1 x mini jumper pack
- 1 x ATA66/100 flat cable
- 1 x SATA Power cable
- 2 x SATA cable
- 1 x Dual RS232 cable
- 1 x KB/MS Y cable
- 1 x USB cable
- 1 x Audio cable
- 1 x Utility CD
- 1 x QIG (quick installation guide)

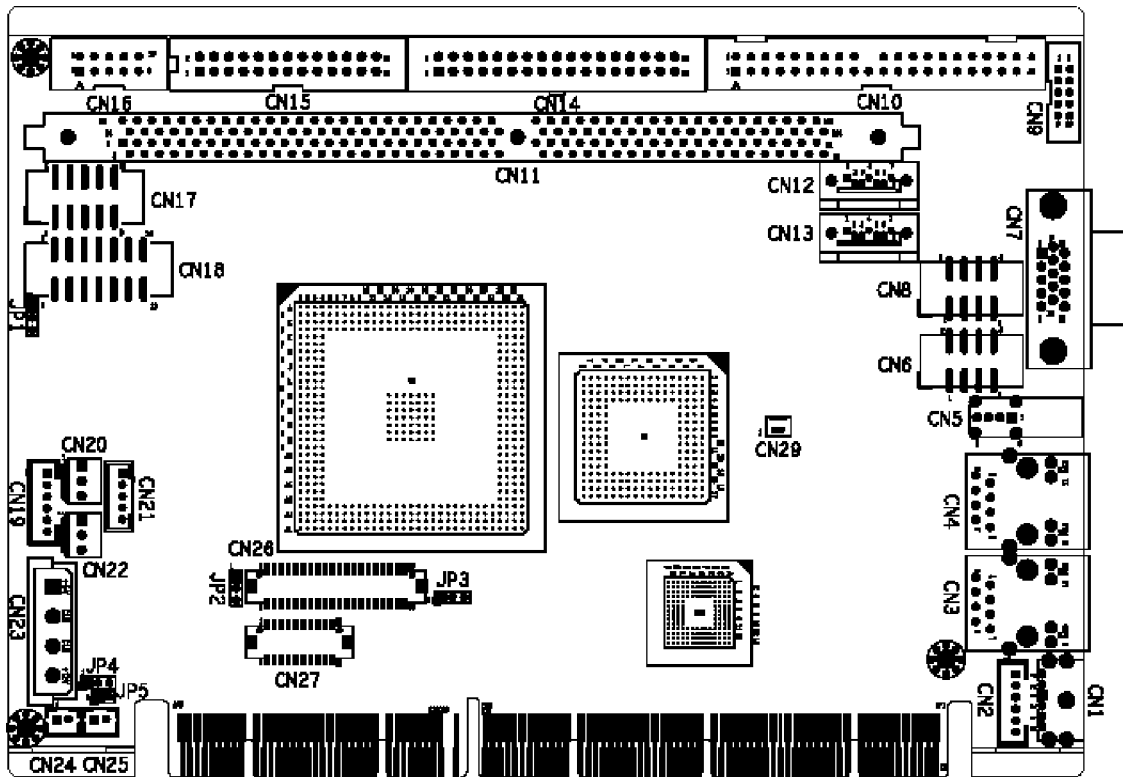
Specifications

- z CPU: AMD LX800-500MHz
- z System Chipset: CS5536
- z BIOS: Award BIOS
- z System memory: 1x 184-pin DDR 333/400MHz up to 1GB
- z Ethernet: Dual Realtek RTL8110C for 10/100 Mbps
- z I/O
 - I/O Interface:
 - 4 x USB 2.0
 - 2 x SATA-150 with ALI M5283 RAID 0.1 function support.
 - 1 x LPT
 - 1 x FDD
 - 1 x IDE
 - 2 x RS232
 - 1 x RS232/422/485
 - 1 x PS2
 - z Digital I/O: 8 bit digital I/O, 4 input / 4output by super I/O
 - z Super I/O: W83627HG
 - z Audio: Realtek ALC203 with AC'97 codec
 - z SSD: CFII
 - z Display
 - integrated in LX800, Support CRT and 24-bit TTL displays
 - LVDS: Single 18 bit LVDS
 - z WDT: Software programable supports 1-255 sec.System reset
 - z Power supply: 5V/12V; AT support
 - z Power Consumption:
 - [5V@1.094A](#)+12V@0.07A(LX800, DDR400 256MB HCT11.2)
 - z Temperature: 0 ~ 60°C(32 ~ 140°F)
 - z Humidity: Operation:5%~95% non-condensing
 - z Dimension: 165mm x 115mm
 - z Weight: GW: 1.0Kg

Ordering Information

- 3301900
PCISA CPU Card AMD LX800 500MHz with CRT/LCD, Dual LAN,USB2.0,SATA and Audio
- FDD cable
- LPT cable

Board Layout: Jumper and Connector Locations



CN26: TFT LCD TTL output connector (DF13 40pin)			
Pin	Description	Pin	Description
2	LCD_VCC	1	LCD_VCC
4	GND	3	GND
6	LCD_VCC	5	LCD_VCC
8	GND	7	SDA
10	B1	9	B0
12	B3	11	B2
14	B5	13	B4
16	B7	15	B6
18	G1	17	G0
20	G3	19	G2
22	G5	21	G4
24	G7	23	G6
26	R1	25	R0
28	R3	27	R2
30	R5	29	R4
32	R7	31	R6
34	GND	33	GND
36	VSYNC	35	CLK
38	HSYNC	37	LCD_EN
40	DISP_EN	39	SCL

CN16: GPIO connector (Box-header 5x2 2.54mm)			
Pin	Description	Pin	Description
1	GND	2	+5V
3	GPO0	4	GPO1
5	GPO2	6	GPO3
7	GPI0	8	GPI1
9	GPI2	10	GPI3

CN18: COM-2 , COM-3 cable connector (Box-header 7x2 2.54mm)			
Pin	Description	Pin	Description
1	DCD#	2	DSR#
3	RxD	4	RTS#
5	TxD	6	CTS#
7	DTR#	8	RI#
9	GND	10	GND
11	TxD485+	12	TxD485-
13	RxD485+	14	RxD485-

* COM-2 use Pin 1-10 , COM-3 use Pin 11-14

CN20: System FAN connector (Wafer 3 pin 2.54mm , White)	
Pin	Description
1	GND
2	VCC5
3	SPD_DET

CN25: Reset button connector (Wafer 2pin 2.0mm)	
Pin	Description
1	RESET#
2	GND

CN27: TFT LCD LVDS output connector (DF14 20pin)			
Pin	Description	Pin	Description
2	GND	1	GND
4	D0-	3	D0+
6	D1-	5	D1+
8	D2-	7	D2+
10	CLK-	9	CLK+
12	NC	11	NC
14	GND	13	GND
16	SCL	15	SDA
18	LCD_VCC	17	LCD_VCC
20	LCD_VCC	19	LCD_VCC

Jumpers setting and Connectors

JP1 : COM-3 RS422/485 function select jumper (Default 2-3)	
JP1	DESCRIPTION
1-2	RS-422
2-3	RS-485

JP2 : LCD Vcc select (Default 1-2)	
JP2	DESCRIPTION
1-2	LCD_VCC is +3.3V
2-3	LCD_VCC is +5V

JP3 : LCD Clock select jumper (Default 1-2)	
JP3	DESCRIPTION
1-2	Normal clock
2-3	Invert clock

JP4 : PCI VIO voltage select jumper	
JP4	DESCRIPTION
1-2	VIO is 5V
2-3	VIO is 3.3V

JP5 : AT Power select jumper (Default ON)	
JP5	DESCRIPTION
ON	Use AT Power (if use ATX Power will be auto power on)
OFF	Use ATX Power

CN2: PS2 Keyboard / Mouse connector (Wafer 6pin 2.0mm)	
Pin	Description
1	+5V
2	MSDATA
3	MSCLK
4	KBDATA
5	KBCLK
6	GND

CN8: Standard USB connector (Pin-header 4x2 2.54mm)			
Port-1		Port-2	
Pin	Description	Pin	Description
1	+5V	1	GND
3	D2-	3	D3+
5	D2+	5	D3-
7	GND	7	+5V

CN17: COM-1 cable connector (Box-header 5x2 2.54mm)			
Pin	Description	Pin	Description
1	DCD	6	DSR
2	RXD	7	RTS
3	TXD	8	CTS
4	DTR	9	RI
5	GND	10	GND

CN9: Audio connector (Box-header 5x2 2.0mm)			
Pin	Description	Pin	Description
1	LINE_OUT-R	2	LINE_IN-R
3	GND	4	GND
5	LINE_OUT-L	6	LINE_IN-L
7	GND	8	GND
9	MIC-IN	10	NC

CN10: IDE connector (Box-header 20x2 2.54mm , Blue)			
Pin	Description	Pin	Description
1	RESET#	2	GND
3	D7	4	D8
5	D6	6	D9
7	D5	8	D10
9	D4	10	D11
11	D3	12	D12
13	D2	14	D13
15	D1	16	D14
17	D0	18	D15
19	GND	20	NC
21	DRQ	22	GND
23	IOW#	24	GND
25	IOR#	26	GND
27	RDY	28	NC
29	ACK#	30	GND
31	INT	32	NC
33	A1	34	CABLEID
35	A0	36	A2
37	CS0#	38	CS1#
39	ASP#	40	GND

CN19: LED Connector (Wafer 6pin 2.0mm)	
Pin	Description
1	+5V
2	GND
3	Power LED+
4	Power LED-
5	HDD LED+
6	HDD LED-

CN21: LCD Invert connector (Wafer 5pin 2.0mm)	
Pin	Description
1	ADJ (Def : GND)
2	GND
3	+12V
4	GND
5	BL_EN

CN29: Battery connector (Wafer 2pin 1.25mm)	
Pin	Description
1	Battery+
2	Battery-

CN14: Floppy connector (Box-header 17x2 2.54mm)			
Pin	Description	Pin	Description
1	GND	2	DENSEL
3	GND	4	NC
5	GND	6	NC
7	GND	8	INDEX#
9	GND	10	MOA#
11	GND	12	NC
13	GND	14	DSA#
15	GND	16	NC
17	GND	18	DIR#
19	GND	20	STEP#
21	GND	22	WDATA#
23	GND	24	WGATE#
25	GND	26	TRACK0#
27	GND	28	WP#
29	GND	30	RDATA#
31	GND	32	HEAD#
33	GND	34	DSKCHG#

CN15: Print port connector (Box-header 13x2 2.54mm)			
Pin	Description	Pin	Description
1	STB#	2	AFD#
3	PD0	4	ERR#
5	PD1	6	INIT#
7	PD2	8	SLIN#
9	PD3	10	GND
11	PD4	12	GND
13	PD5	14	GND
15	PD6	16	GND
17	PD7	18	GND
19	ACK#	20	GND
21	BUSY	22	GND
23	PE	24	GND
25	SLCT	26	NC

CN23: Main power input connector (Wafer 4pin 5.08mm)	
Pin	Description
1	+5V
2	GND
3	GND
4	+12V

CN22: Suspend power and PSON# signal connector (Wafer 3 pin 2.54mm , Red)	
Pin	Description
1	GND
2	PSON#
3	SUS_5V

CN24: ATX Power button connector (Wafer 2pin 2.0mm)	
Pin	Description
1	PWRBTN#
2	GND

Any advice or comments about our products and service, or anything we can help you with please don't hesitate to contact with us. We will do our best to support you for your products, projects and business

Global American Inc.

Address: 17 Hampshire Drive
Hudson, NH 03051

TEL: Toll Free (U.S. Only) 800-833-8999
(603)886-3900

FAX: (603)886-4545

Website: <http://www.globalamericaninc.com>

E-Mail: salesinfo@globalamericaninc.com

