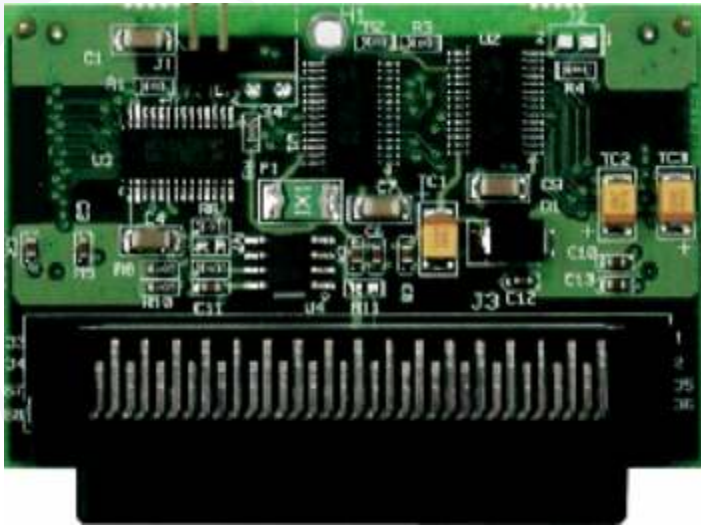


1801090

Ultra 160 SCSI Mini-PCI card



- Support 1 SCSI Ports
- Support LSI 53C1000R chipset (Fully Plug-N-Play)

1801090

Product Overview

The Mini PCI SCSI card uses LSI 53C1000R chipset, speeding up transfer rates to 160MB/sec.

A best solution as a bridge of MiniPCI to SCSI interface. The SCSI interface features easy to use as it supports hot-plug function.

Furthermore, the SCSI interface can provide the usage of 7 to 15 additional devices, which solve the issue of different application needs.

Technical Information

Form Factor	Mini-PCI Card
Chipset	LSI 53C1000R chipset
I/O	1 x Ultra 160 SCSI port

Extension	Mini-PCI Interface
Environmental	Operating Temperature: 0°C - +60°C, Humidity: 5% - 95%

Ordering Information

Article	Part.-No.	Description
1801090	1801090	Ultra 160 SCSI Mini-PCI card



Rear Side



Rear Side

